



FILE NO: _____ COMPANY: **CORE ENERGY LLC.**
 WELL: **STATE CHARLTON C3-30A**
 FIELD: **CHARLTON 30-31**
 COUNTY: **OTSEGO** STATE: **MICHIGAN**
 APN NO: _____
 21-157-3605-02

Ver. 3.87
 THANK YOU
 TVD LOG
 LOCATION: **SE/4, SE/4, SW/4,
 495' FSL & 2157' FWL,
 CHARLTON TWP.
 SEC 30 TWP 31N RGE D1W**

PERMANENT DATUM: **G.L.** ELEVATION: **1171 FT**
 LOG MEASURED FROM: **K.B.** **13 FT** ABOVE P.D.
 DRILL MEAS. FROM: **KELLY BUSHING**

OTHER SERVICES
 DLL/M/L/GR
 C81L/GR
 ELEVATIONS:
 KB 1184 FT
 DF 1170 FT
 OL 1171 FT

DATE	26 JAN 2007	
RUN	TRIP	1
SERVICE ORDER	518138	
DEPTH DRILLER	3830 FT	
DEPTH LOGGER	3574 FT (TVD)	
BOTTOM LOGGED INTERVAL	3572 FT (TVD)	
TOP LOGGED INTERVAL	1650 FT (TVD)	
CASING DRILLER	11.75 IN	889 FT
CASING LOGGER	889 FT	
BIT SIZE	7.875 IN	
TYPE OF FLUID IN HOLE	BRINE	
DENSITY	10.4 LB/G	29 S
PH	9.0	
SOURCE OF SAMPLE	BOREHOLE	
RM AT MEAS. TEMP.	.012 OHM	75 DEGF
RMF AT MEAS. TEMP.	.008 OHM	75 DEGF
RMG AT MEAS. TEMP.	.015 OHM	75 DEGF
SOURCE OF RMF	C.	
RM AT BHT	.014 OHM	88 DEGF
TIME SINCE CIRCULATION	8 HRS.	
MAX. RECORDED TEMP.	88 DEGF	
EQUIP. NO.	4134	MT. PLEASANT
RECORDED BY	DARWIN BRENN	
WITNESSED BY	MR. JOE HERPST	

IN MAKING INTERPRETATIONS OF LOGS OUR EMPLOYEES WILL GIVE CUSTOMER THE BENEFIT OF THEIR BEST JUDGEMENT, BUT SINCE ALL INTERPRETATIONS ARE OPINIONS BASED ON INFERENCES FROM ELECTRICAL OR OTHER MEASUREMENTS, WE CANNOT, AND WE DO NOT GUARANTEE THE ACCURACY OR CORRECTNESS OF ANY INTERPRETATION. WE SHALL NOT BE LIABLE OR RESPONSIBLE FOR ANY LOSS, COST, DAMAGES, OR EXPENSES WHATSOEVER INCURRED OR SUSTAINED BY THE CUSTOMER RESULTING FROM ANY INTERPRETATION MADE BY ANY OF OUR EMPLOYEES.

BIT SIZE	FROM	TO
8.889 IN	0 FT	84 FT
14.75 IN	84 FT	889 FT
10.825 IN	889 FT	1707 FT
7.875 IN	1707 FT	3830 FT

SIZE	WEIGHT	GRADE	FROM	TO
18 IN			0 FT	84 FT
11.75 IN			0 FT	889 FT

REMARKS

RUN 1 TRIP 1: **KELLY BUSHING WAS USED AS DEPTH REFERENCE POINT.**

DENSITY AND NEUTRON POROSITY WERE RECORDED ON A LIMSTONE MATRIX.

BVOL = TOTAL BOREHOLE VOLUME
CVOL = CEMENT VOLUME BASED ON 5.5" PRODUCTION CASING

MAXIMUM BOREHOLE DEVIATION = 15 DEG.

RIG: **B # H # 1**
 CREW: **J. GRETKA & T. THERIAULT J. O'BRIEN**

EQUIPMENT DATA

RUN	TRIP	TOOL	SERIES NO.	SERIAL NO.	POSITION
1	1	12" ISO	3887A	10058187	N/A
1	1	12" ISO	3887A	0364706	N/A
1	1	TIRM	3881A	180388	FRET
1	1	COM. REMOTE	3514A	178234	N/A
1	1	GR	1328A	178411	DECENTRALIZE
1	1	CN	2446A	10173124	DECENTRALIZE
1	1	ZDL ELECT	2228A	178088	N/A
1	1	ZDL MAND.	2228A	172847	PAD DEVICE
1	1	DEL. KNOB	3838A	10058185	N/A
1	1	SLAM ADAPT.	3516A	178245	N/A
1	1	ISO SUB.	3887A	153884	N/A
1	1	DLL ELECT	1238A	178619	N/A
1	1	DLL MAND.	1238A	10108107	CENTRALIZE
1	1	KNUCKLE	3821A	80630	N/A
1	1	MLL	3104A	058483	CENTRALIZE

TVD MAIN SECTION

ECLIPS 5.1 Sep 16, 2005
Updates: 1,2

Fri Jan 26 15:54:16 2007

Perplf /main/61

Cplot 9.18

Pdf_Cpp /main/16

Fileview 5.00

PARAMETER AND FILTER SUMMARY REPORT

File: /data/core_energy/st_charlton_03_30a/1778aR02.prm
 LOGGING MODE: DEPTH DIRECTION: UP
 TOP DEPTH: 83.250 ft BOTTOM DEPTH: 3619.000 ft

SYMMETRIC FILTER

MEASUREMENT TYPE	PARAMETER	VALUE	UNITS	INTERVAL (ft)	
SPEED	FILTER ()	medium (1)		TOP	BOTTOM
TENSION	FILTER ()	medium (1)		"	"
GR	FILTER ()	medium (1)		"	"
CN	FILTER ()	medium (1)		"	"
ZDL	FILTER ()	medium (1)		"	"

BOREHOLE & CEMENT

MEASUREMENT TYPE	PARAMETER	VALUE	UNITS	INTERVAL (ft)	
CASING - BOREHOLE & CEMENT VOLUME	CASING O.D.	5.500	1n	TOP	BOTTOM
	CASING THICKNESS	0.235	1n	"	"
X-Y COMBINED CALIPER PROCESSING	X-Y Caliper	X-Axis		"	"
BIT SIZE	BIT SIZE	7.875	1n	"	"
BOREHOLE CORR DIAMETER SOURCE	CALIPER/FIXED DIA. (cnbh*)	USE FIXED SIZE		TOP	893.250
		USE CALIPER		893.250	BOTTOM
BOREHOLE CORR DIAMETER	FIXED DIAMETER (cnbh*)	11.000	1n	TOP	BOTTOM

CN PROCESSING

MEASUREMENT TYPE	PARAMETER	VALUE	UNITS	INTERVAL (ft)	
2448 CN MATRIX	2448 MATRIX	LIMESTONE		TOP	BOTTOM
CN SALINITY CORRECTION	SALINITY	225000	ppm	"	"
CN CASING & CEMENT CORRECTION	CORRECTION	CN OFF		TOP	899.500
		BIT SIZE BEHIND CSNG	14.750	1n	899.500

ZDL PROCESSING

MEASUREMENT TYPE	PARAMETER	VALUE	UNITS	INTERVAL (ft)	
ZDL CHI-SMOOTH FILTER	DEM CHISM	ON		TCP	BOTTOM
	PE CHISM	ON		"	"
DENSITY POROSITY	RHOmatrix	2.710	g/cm3	"	"
	RHOfluid	1.100	g/cm3	"	"
ZDL	ZDL TRACKING	ON		"	"

CURVE DESCRIPTION REPORT

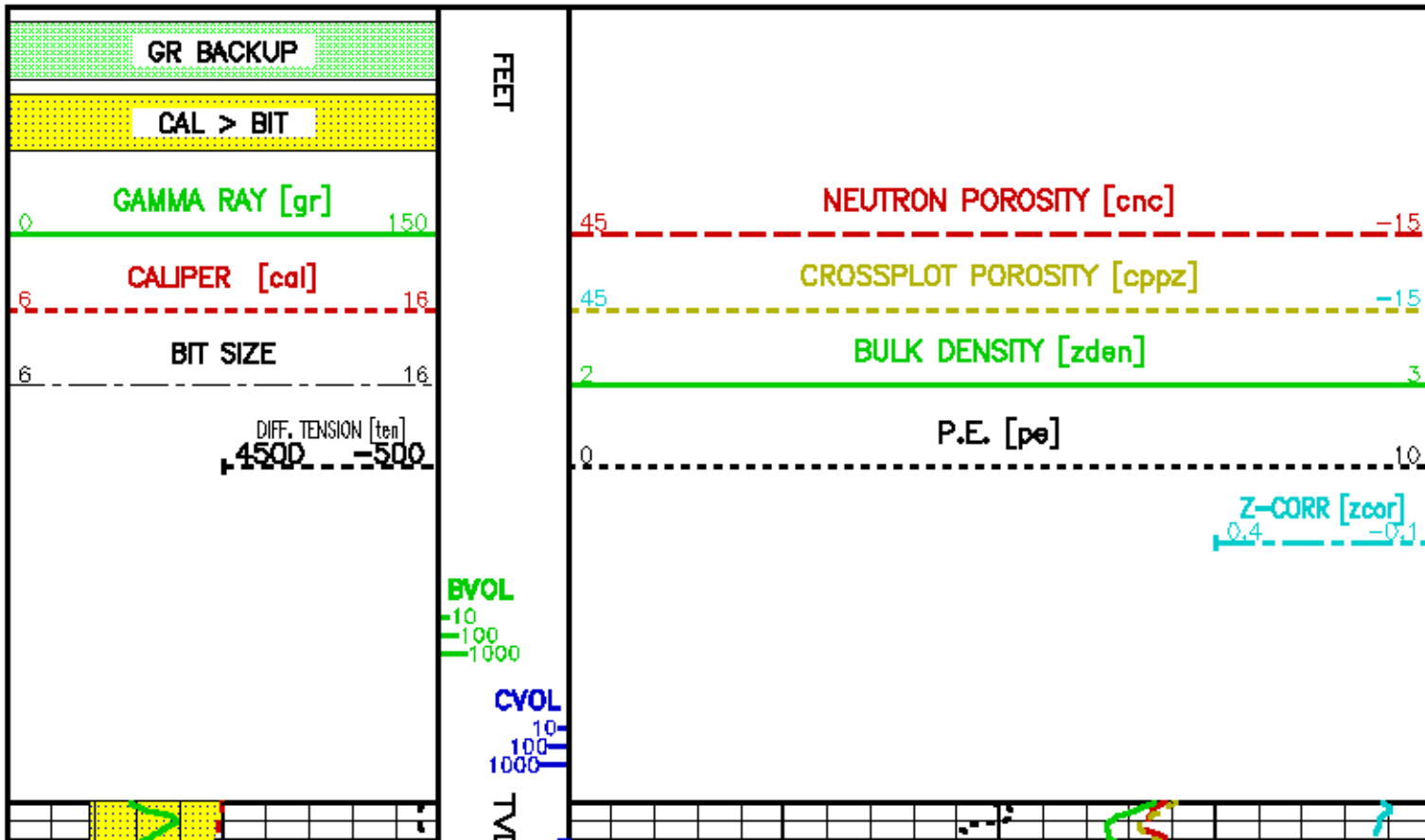
CURVE NAME	CURVE ALIAS	CREATION DATE	CURVE DESCRIPTION
F1:BIT	BIT	Jan 28 15:33:08 2007	BIT SIZE
F1:BVOL	BVOL	Jan 28 15:33:07 2007	BOREHOLE VOLUME
F1:CAL	CAL	Jan 28 15:33:07 2007	CALIPER
F1:CNC	CNC	Jan 28 15:33:12 2007	BOREHOLE SIZE CORRECTED COMPENSATED NEUTRON POROSITY
F1:CPPZ	CPPZ	Jan 28 15:33:18 2007	CROSSPLOT POROSITY FROM ZDEN
F1:CVOL	CVOL	Jan 28 15:33:18 2007	CEMENT VOLUME
F1:GR	GR	Jan 28 15:33:29 2007	GAMMA RAY
F1:PE	PE	Jan 28 15:33:58 2007	PHOTO ELECTRIC CROSS-SECTION
F1:TEM	TEM	Jan 28 15:33:58 2007	DIFFERENTIAL TENSION
F1:ZCOR	ZCOR	Jan 28 15:34:04 2007	DENSITY CORRECTION
F1:ZDEN	ZDEN	Jan 28 15:34:05 2007	FORMATION BULK DENSITY

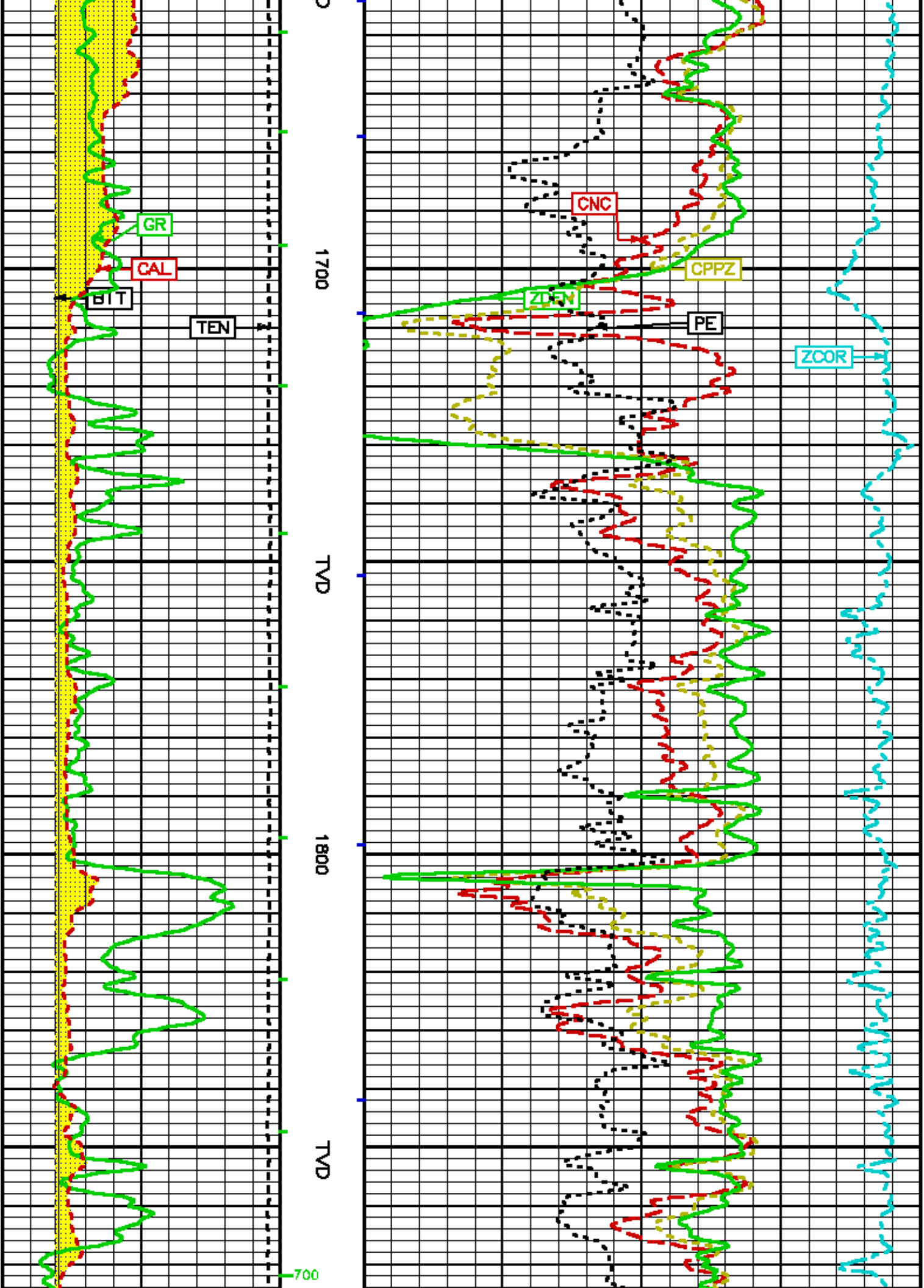
CURVE MEASURE POINT OFFSET

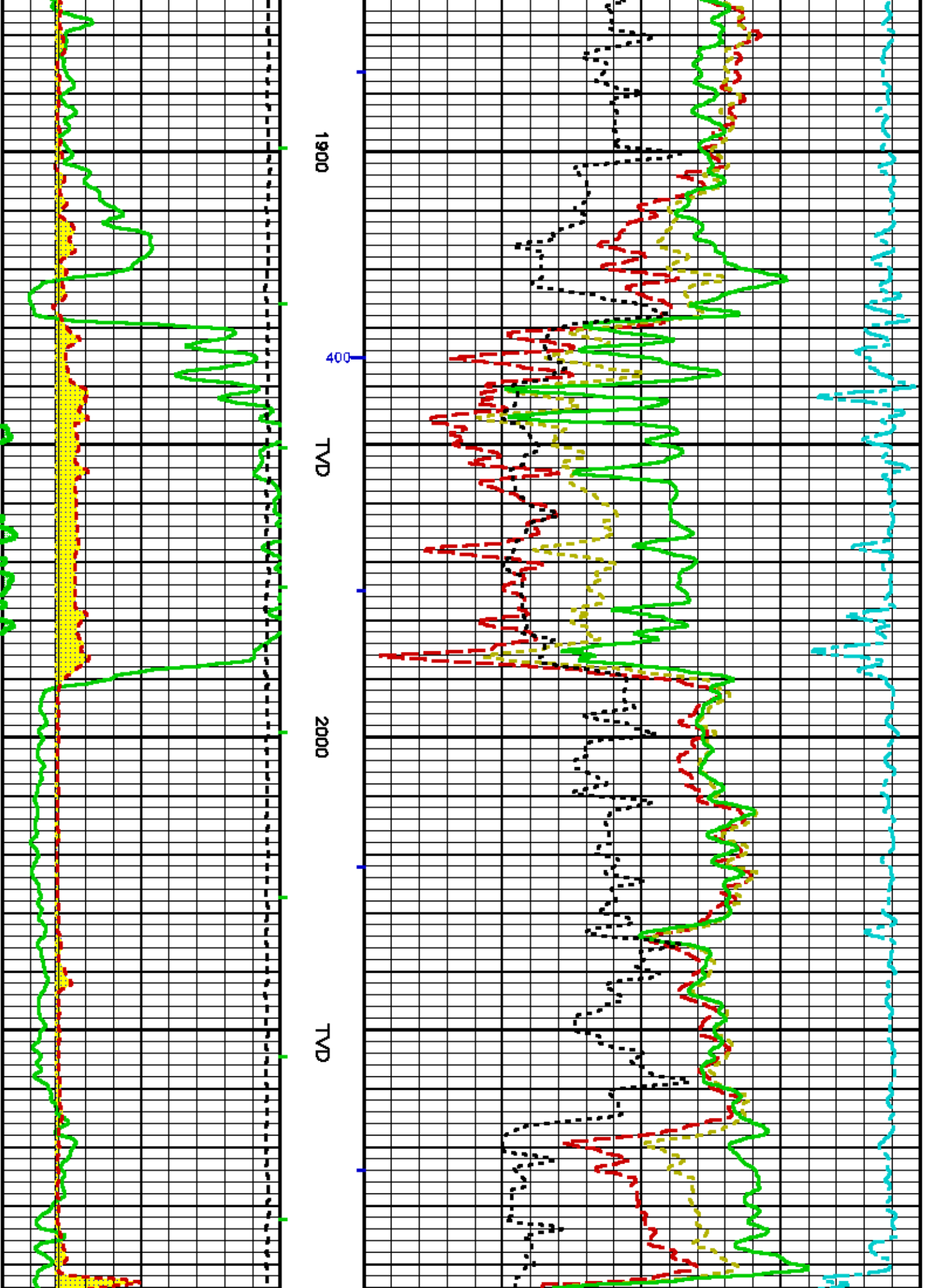
CURVE	OFFSET (ft)	CURVE	OFFSET (ft)	CURVE	OFFSET (ft)	CURVE	OFFSET (ft)
BIT	0.00	CPPZ	47.50	TEM	0.00		
CAL	3.00	GR	72.00	ZCOR	47.50		
CNC	85.00	PE	47.50	ZDEN	47.50		

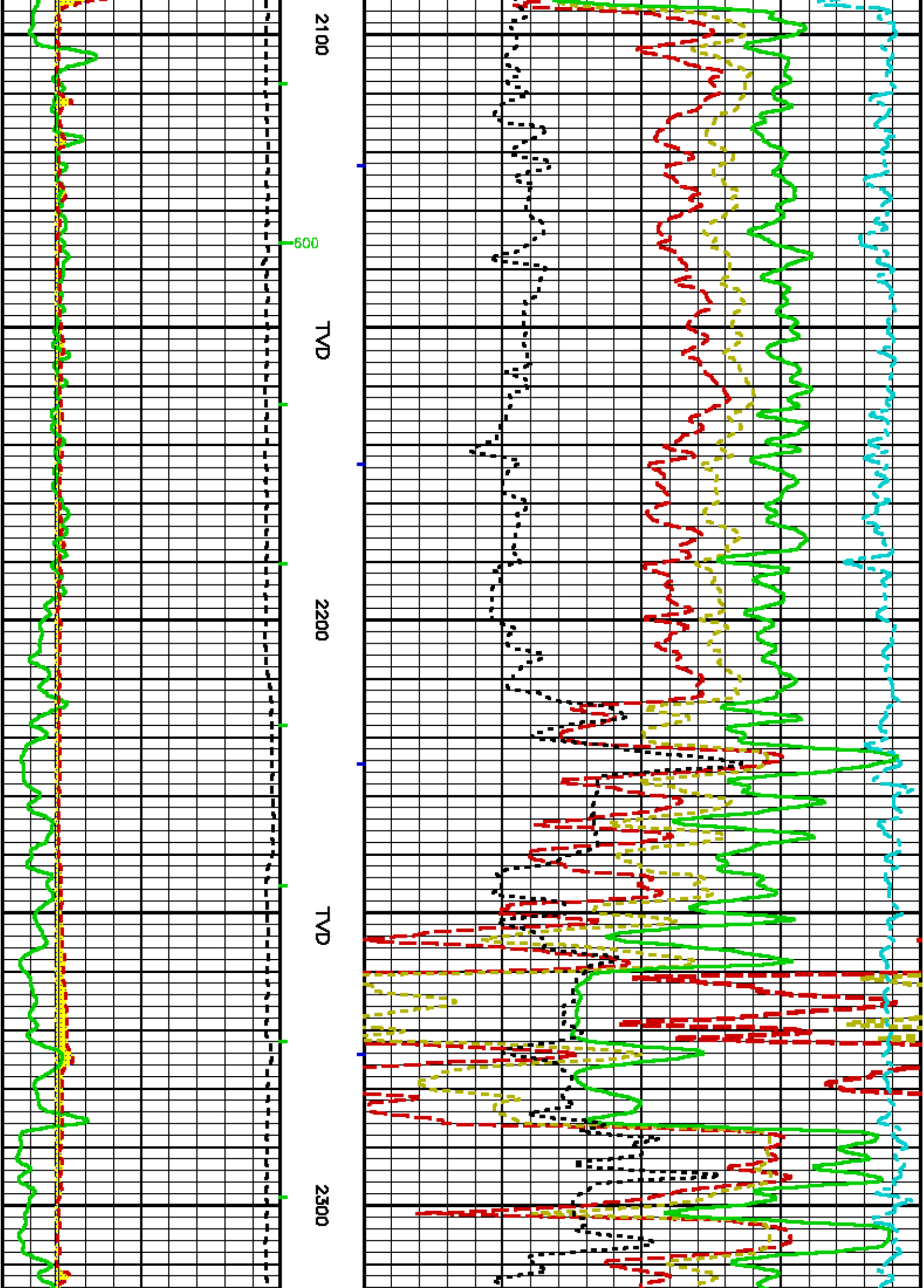
Presentation : srs1:/data/core_energy/st_charlton_c3_30a/zdn_TVD.pdf [5"/100' Scale]
 Plot Interval : 1850 - 3587.5 Feet

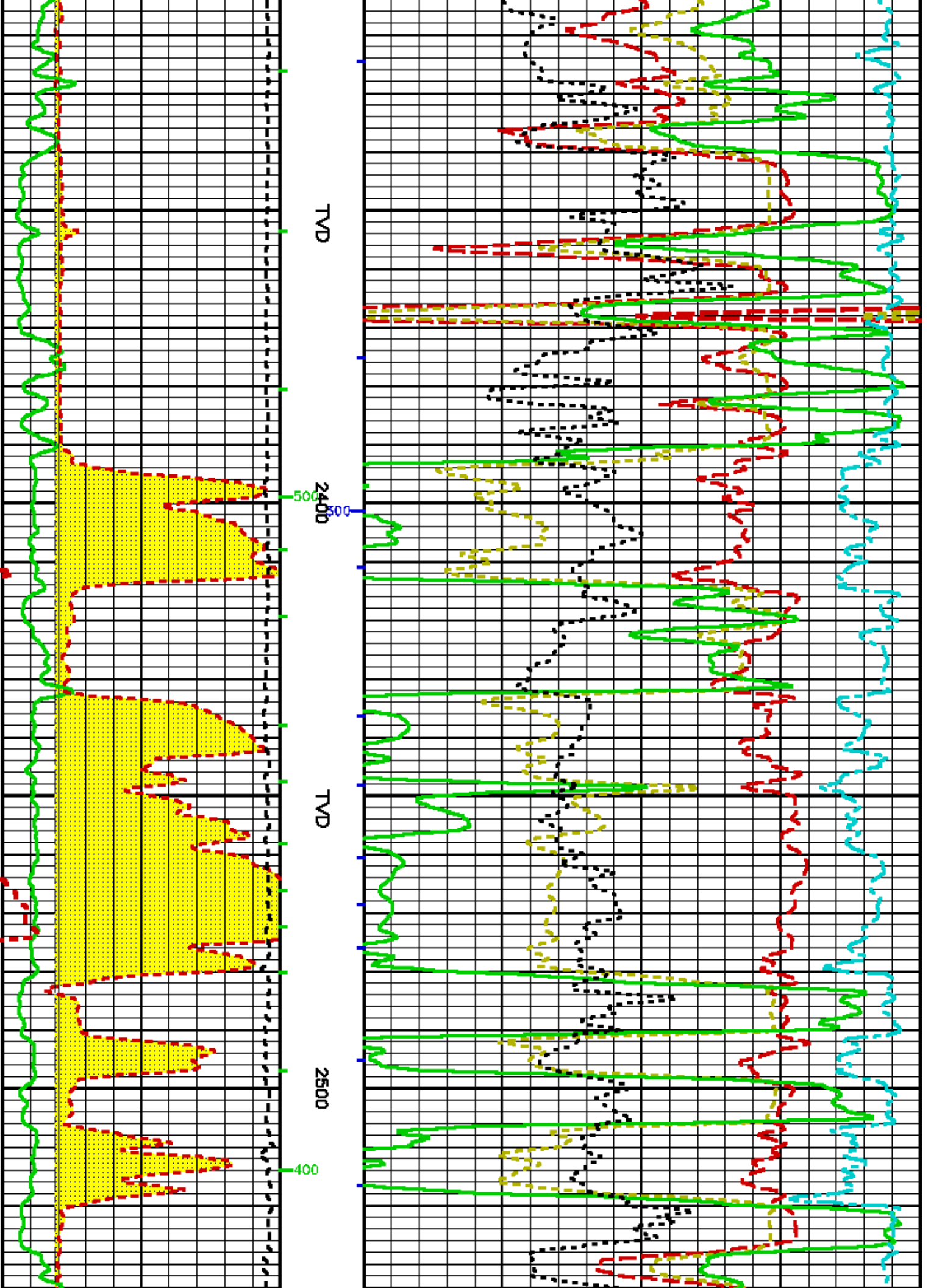
 Data File 1 : F1 : srs1:/data/core_energy/st_charlton_c3_30a/1776aR0v.xdf
 Created On : Jan 28 15:33:08 2007
 Company : CORE ENERGY, LLC.
 Well : STATE CHARLTON C3-30A
 Field : CHARLTON 30-31
 File Interval : -20.75 - 3587.5 Feet
 Oct : 1776a

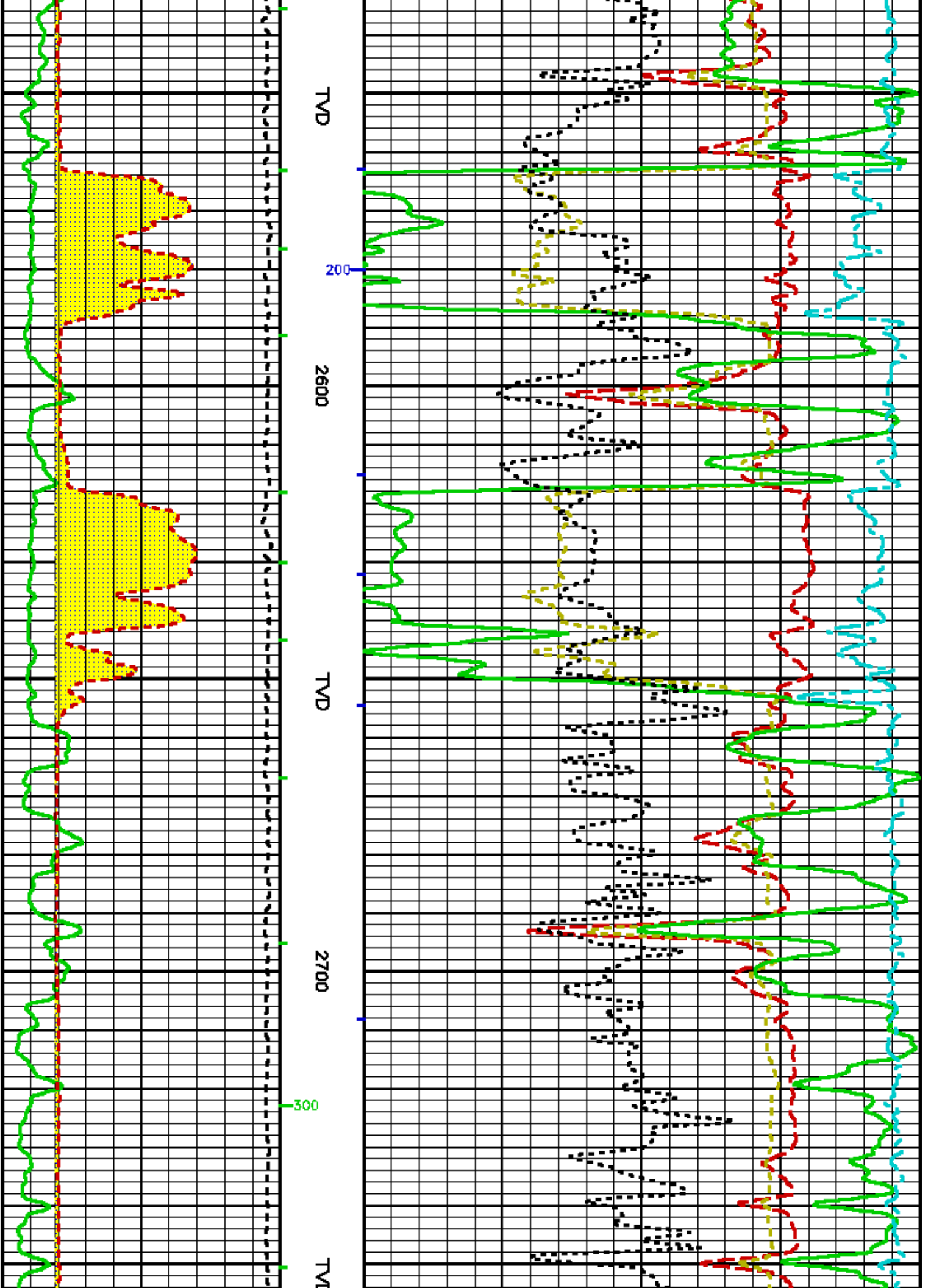


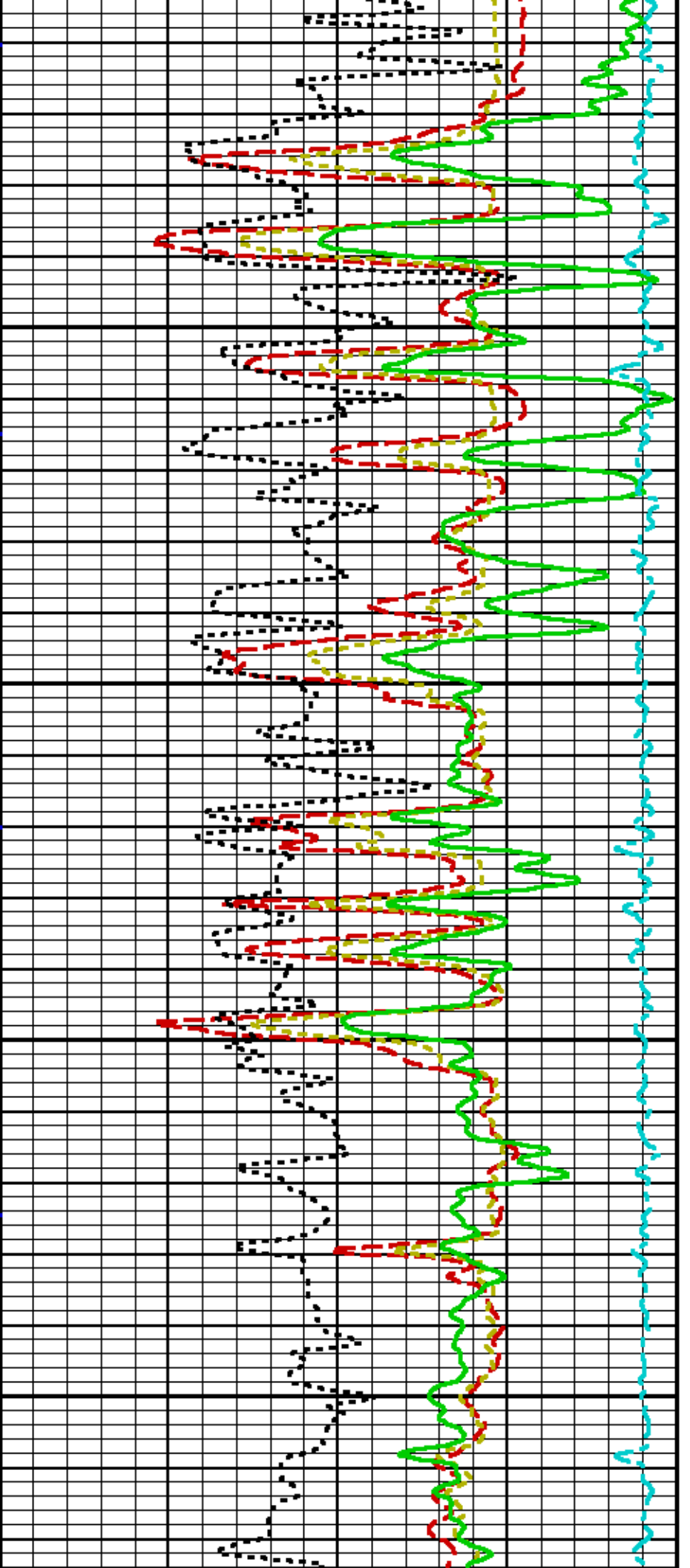










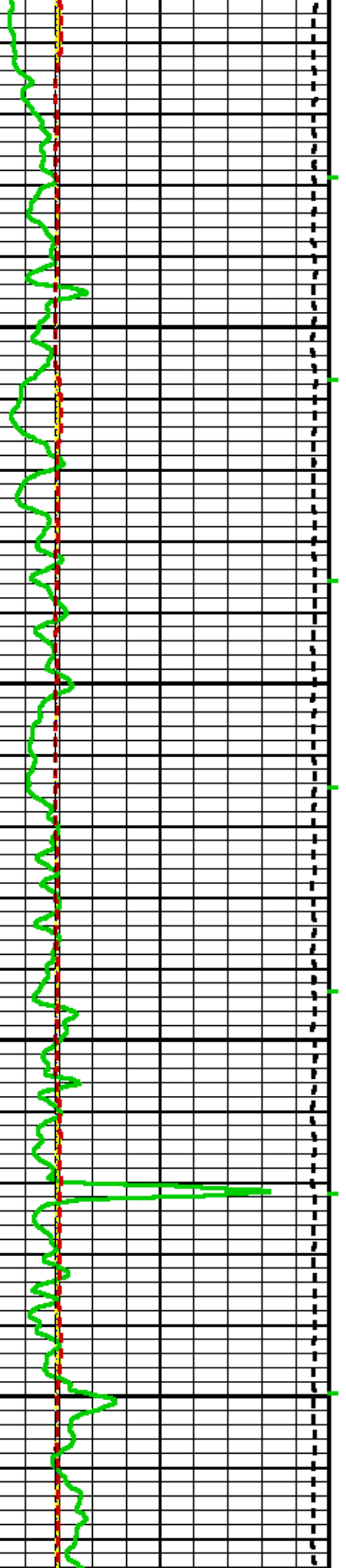


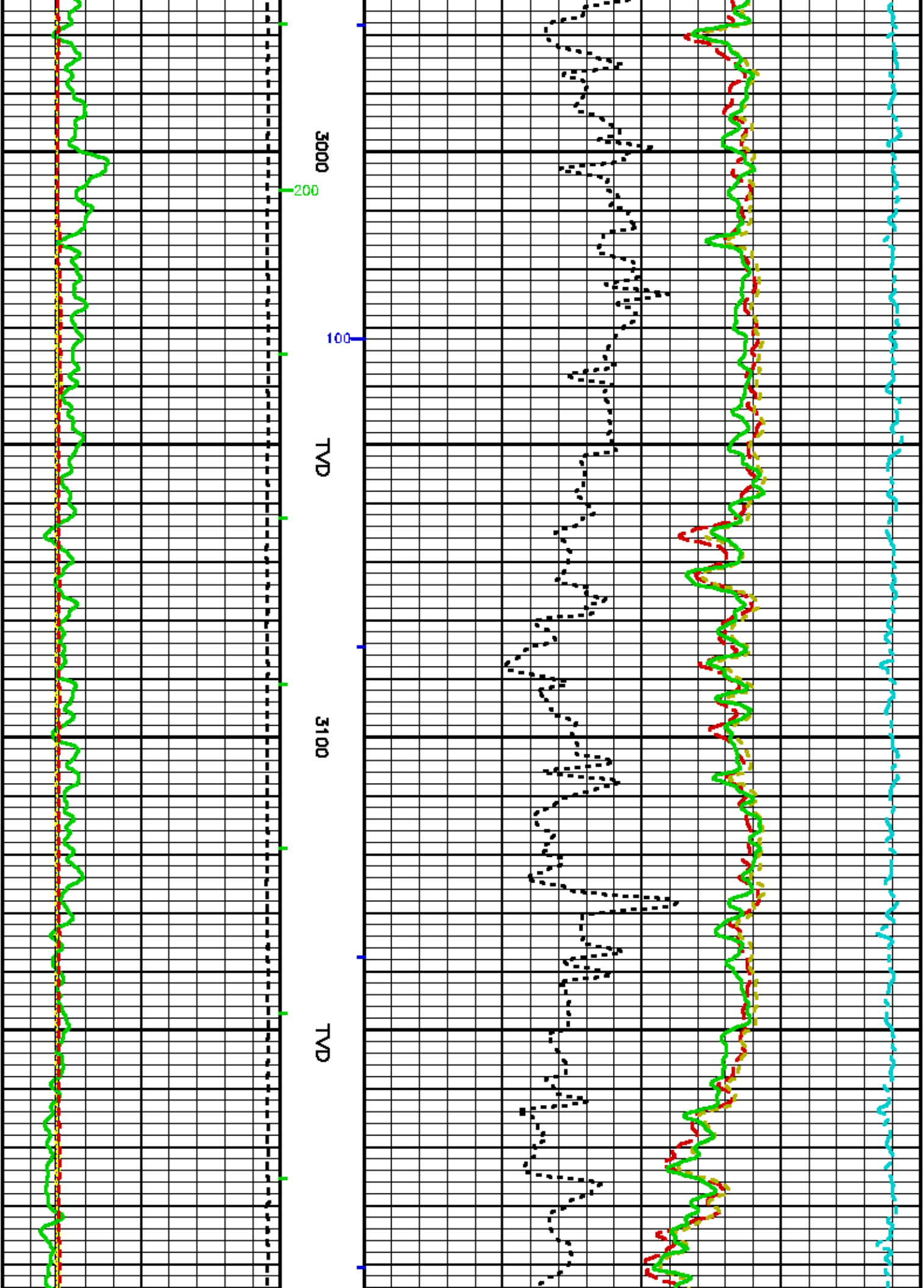
2800

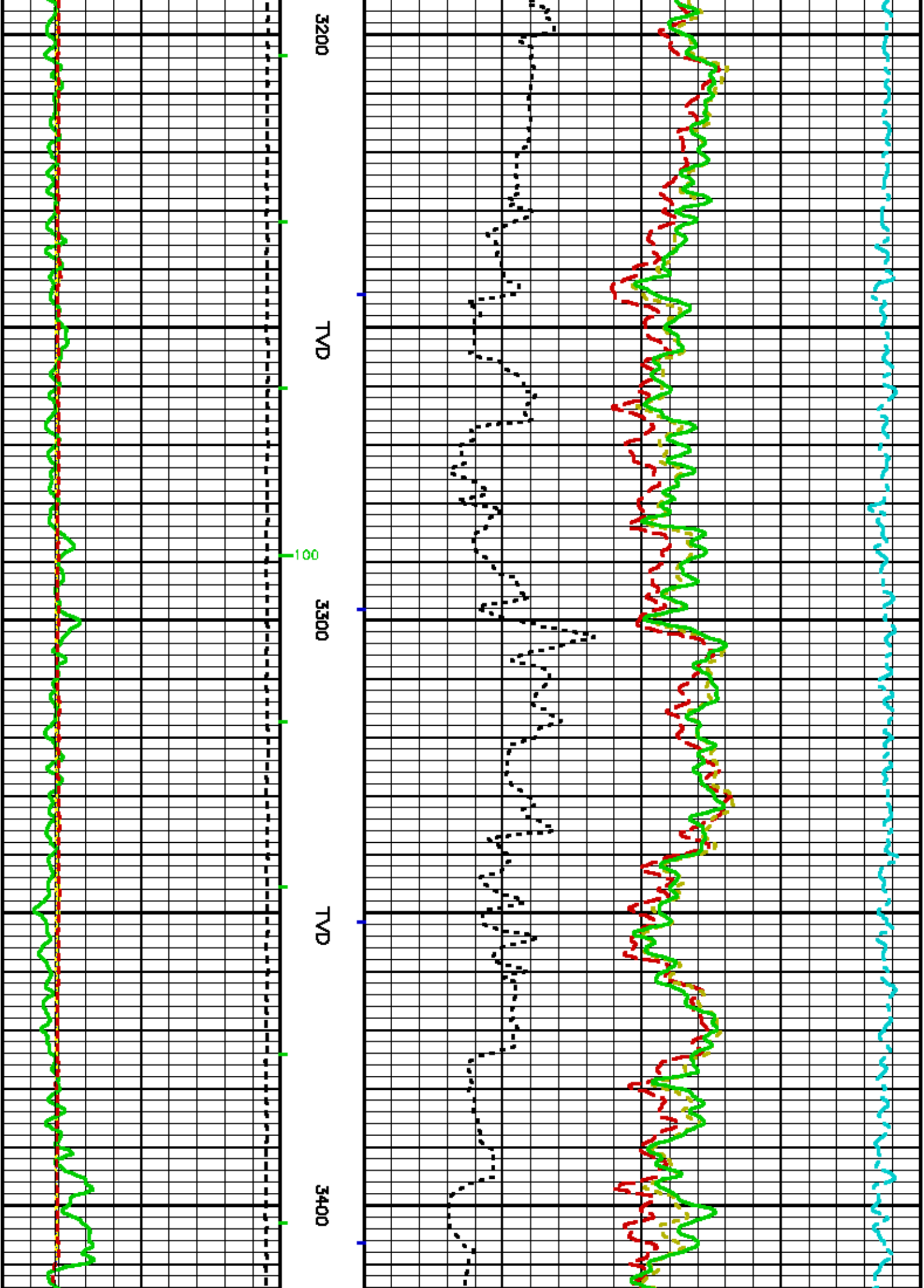
TVD

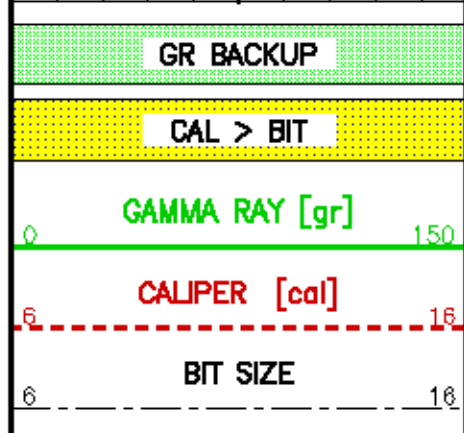
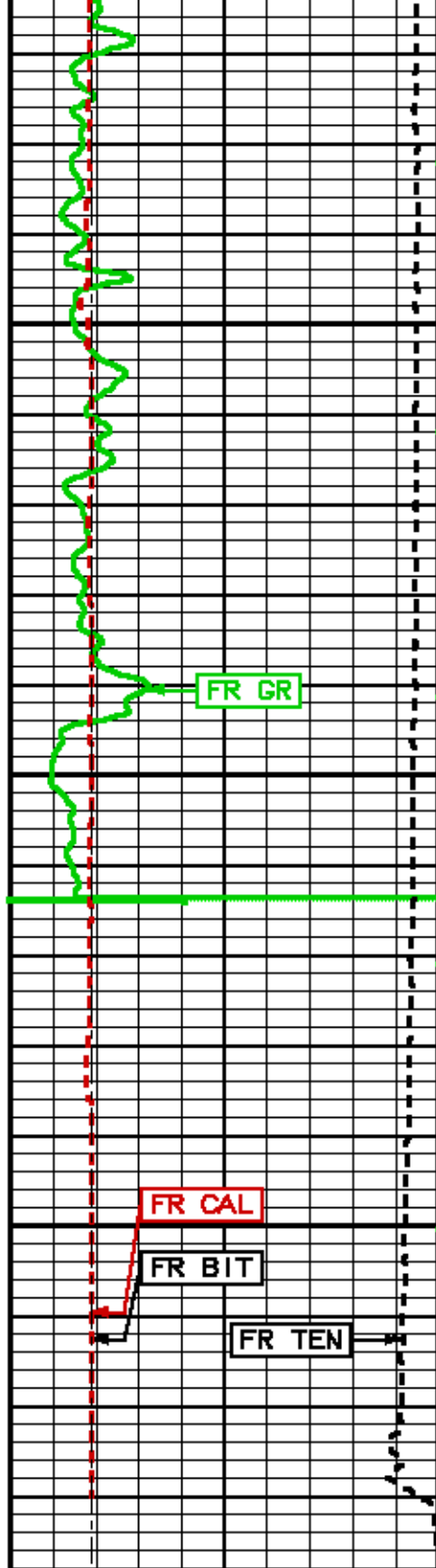
2900

TVD

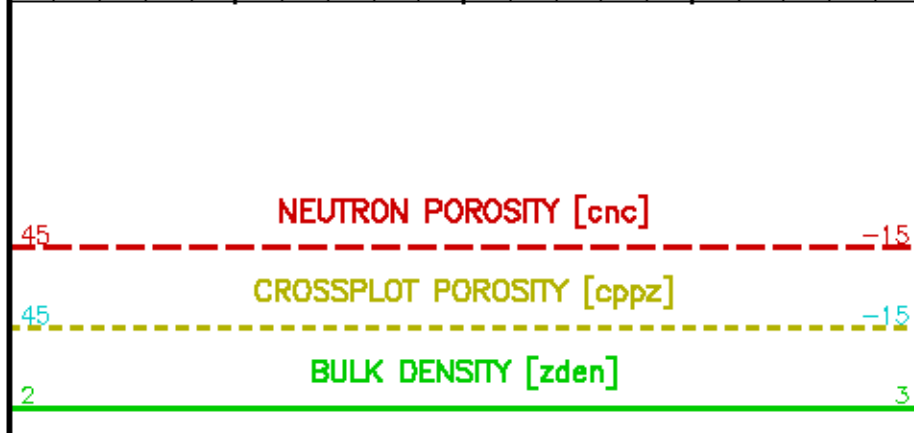
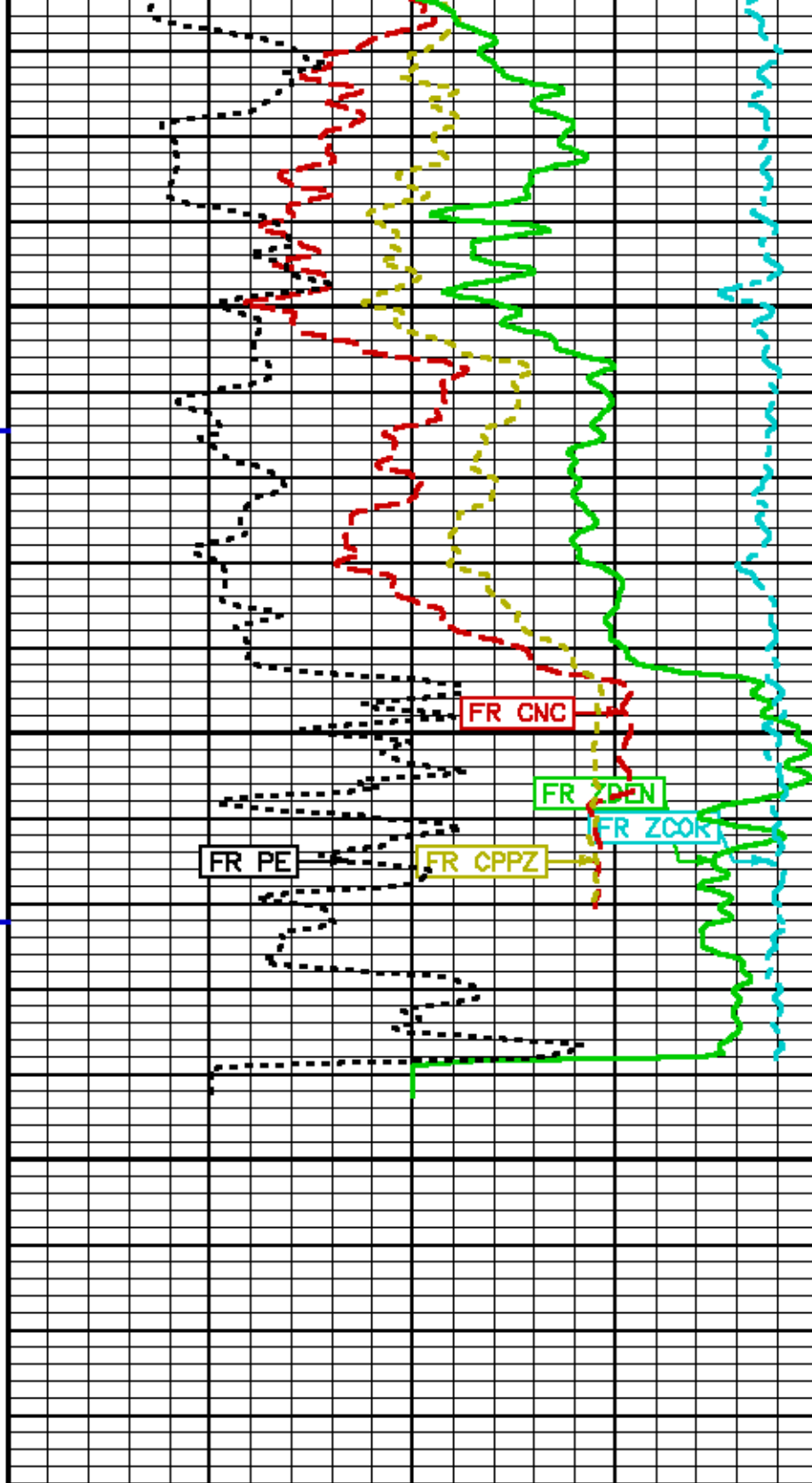








TVD
3500
TVD
FEEET



DIFF. TENSION [ten]
4500 -500

P.E. [pe]

Z-CORR [zcor]
0.4 -0.1

BVOL
-10
-100
-1000

CVOL
10
100
1000



COMPANY CORE ENERGY LLC.
WELL STATE CHARLTON C3-30A
FIELD CHARLTON 30-31
COUNTY OTSEGO STATE MICHIGAN

FILE NO:

API NO:
21-137-3805-02



LOCATION:
SE/4, SE/4, SW/4,
485' FSL & 2137' FWL,
CHARLTON TWP.
SEC 30 TWP 31N RGE 01W

ELEVATIONS:
KB 1184 FT
DF 1170 FT
GL 1171 FT
DATE 26 JAN 2007

THANK YOU!
TVD LOG